

**BALDOR® • RELIANCE** 

**Product Information Packet**

**EM3313T-58**

**10HP, 1460RPM, 3PH, 50HZ, 215T, 3752M, OPSB, F1**

Part Detail							
Revision:	H	Status:	PRD/A	Change #:		Proprietary:	No
Type:	AC	Elec. Spec:	37WGR070	CD Diagram:	CD0382	Mfg Plant:	
Mech. Spec:	37B101	Layout:	37LYB101	Poles:	04	Created Date:	12-08-2014
Base:	RG	Eff. Date:	09-25-2019	Leads:	6#14		

Specs			
Catalog Number:	EM3313T-58	Inverter Code:	Not Inverter
Enclosure:	OPSB	KVA Code:	J
Frame:	215T	Lifting Lugs:	Standard Lifting Lugs
Frame Material:	Steel	Locked Bearing Indicator:	No Locked Bearing
Output @ Frequency:	10.000 HP @ 50 HZ	Motor Lead Quantity/Wire Size:	6 @ 14 AWG
Synchronous Speed @ Frequency:	1500 RPM @ 50 HZ	Motor Lead Exit:	Ko Box
Voltage @ Frequency:	400.0 V @ 50 HZ	Motor Lead Termination:	Flying Leads
XP Class and Group:	None	Motor Type:	3752M
XP Division:	Not Applicable	Mounting Arrangement:	F1
Agency Approvals:	UR	Power Factor:	84
	WEEE	Product Family:	General Purpose
	CSA	Pulley End Bearing Type:	Ball
	CE	Pulley Face Code:	Standard
Auxillary Box:	No Auxillary Box	Pulley Shaft Indicator:	Standard
Auxillary Box Lead Termination:	None	Rodent Screen:	None
Base Indicator:	Rigid	RoHS Status:	ROHS COMPLIANT
Bearing Grease Type:	Polyrex EM (-20F +300F)	Shaft Extension Location:	Pulley End
Blower:	None	Shaft Ground Indicator:	No Shaft Grounding

<b>Current @ Voltage:</b>	14.300 A @ 400.0 V	<b>Shaft Rotation:</b>	Reversible
<b>Design Code:</b>	B	<b>Shaft Slinger Indicator:</b>	No Slinger
<b>Drip Cover:</b>	No Drip Cover	<b>Speed Code:</b>	Single Speed
<b>Duty Rating:</b>	CONT	<b>Motor Standards:</b>	NEMA
<b>Electrically Isolated Bearing:</b>	Not Electrically Isolated	<b>Starting Method:</b>	Wye Start - Delta Run
<b>Feedback Device:</b>	NO FEEDBACK	<b>Thermal Device - Bearing:</b>	None
<b>Front Face Code:</b>	Standard	<b>Thermal Device - Winding:</b>	None
<b>Front Shaft Indicator:</b>	None	<b>Vibration Sensor Indicator:</b>	No Vibration Sensor
<b>Heater Indicator:</b>	No Heater	<b>Winding Thermal 1:</b>	None
<b>Insulation Class:</b>	F	<b>Winding Thermal 2:</b>	None

Nameplate NP2716L											
CAT NO	EM3313T-58										
SPEC.	37B101R070G1										
HP	10/7.5KW							PH	3		
VOLTS	400										
AMP	14.3										
RPM	1460										
FRAME	215T				HZ	50			I.P.	23	
SER.F.	1.15			CODE	J		DES	B		CL	F
NOM.EFF.	90.4							%		(100%)	
PF	84							USABLE AT 208V			
RATING	40C AMB-CONT						CC				
DE BRG	6307				ODE	6206					
ENCL	OPSB			SN							
BLANK	IE3-91.6(75%)92.0(50%)										
	75KG										

Parts List		
Part Number	Description	Quantity
SA290883	SA 37B101R070G1	1.000 EA
RA277034	RA 37B101R070G1	1.000 EA
HA6361A01	LIFTING LUG FOR 37, 39 & 40 FRAME ZINC	2.000 EA
37CB3006	37 CB CASTING W/1.38 LEAD HOLE @ 6:00	1.000 EA
51XW2520A10	.25-20 X .62, TAPTITE II, HEX WSHR SLTD	2.000 EA
11XW1032G06	10-32 X .38, TAPTITE II, HEX WSHR SLTD U	1.000 EA
37EP3203A00	MASTER,ODE,206 BRG,GREASER	1.000 EA
HW4500A01	1641B(ALEMITE)400 UNIV, GREASE FITT	1.000 EA
HW5100A06	W2420-025 WVY WSHR (WB)	1.000 EA
37EP3204D00	MASTER,DE,307 BRG,GREASER	1.000 EA
HW4500A01	1641B(ALEMITE)400 UNIV, GREASE FITT	1.000 EA
XY3118A12	5/16-18 HEX NUT DIRECTIONAL SERRATION	4.000 EA
37CB4516	LIPPED LID FOR 37 FRAME NEC KOBX	1.000 EA
51XW0832A07	8-32 X .44, TAPTITE II, HEX WSHR SLTD SE	4.000 EA
HW2501F21	KEY, 5/16 SQ X 2.375	1.000 EA
HA7000A02	KEY RETAINER RING, 1 1/8 DIA, 1 3/8 DIA	1.000 EA
85XU0407S04	4X1/4 U DRIVE PIN STAINLESS	2.000 EA
LB1115N	LABEL,LIFTING DEVICE (ON ROLLS)	1.000 EA
MJ1000A02	GREASE, MOBIL POLYREX EM - 124047	0.050 LB
MG1000Y03	MUNSELL 2.53Y 6.70/ 4.60, GLOSS 20,	0.028 GA
HA3104A29	THRUBOLT, .31-18 X 15.19	4.000 EA
37AD2001A01	BAFFLE PLATE, PLASTIC 0.63" WIDTH	2.000 EA
LB1119N	WARNING LABEL	1.000 EA
LC0382	CONNECTION LABEL	1.000 EA

<b>Parts List (continued)</b>		
<b>Part Number</b>	<b>Description</b>	<b>Quantity</b>
NP2716L	ALUM SUPER-E NEMA IE3 UL CSA CC CE	1.000 EA
37PA1039	PALLET PACK GRP, PRINT PK1026A06	1.000 EA
MN416A01	TAG-INSTAL-MAINT no wire (1200/bx) 3/19	1.000 EA
PE-0000001	ZRTG PE ASSEMBLY	1.000 EA
FE-0000001	ZRTG FE ASSEMBLY	1.000 EA

**AC Induction Motor Performance Data**

Record # 48454 - Typical performance - not guaranteed values

<b>Winding:</b> 37WGR070-R002	<b>Type:</b> 3752M	<b>Enclosure:</b> TEFC
-------------------------------	--------------------	------------------------

Nameplate Data				400 V, 50 Hz: Single Voltage Motor	
Rated Output (HP)	10			Full Load Torque	36.1 LB-FT
Volts	400			Start Configuration	direct on line
Full Load Amps	14.3			Breakdown Torque	128 LB-FT
R.P.M.	1460			Pull-up Torque	42.5 LB-FT
Hz	50	Phase	3	Locked-rotor Torque	61 LB-FT
NEMA Design Code	B	KVA Code	J	Starting Current	108 A
Service Factor (S.F.)	1.15			No-load Current	5.38 A
NEMA Nom. Eff.	90.4	Power Factor	84	Line-line Res. @ 25°C	1 Ω
Rating - Duty	40C AMB-CONT			Temp. Rise @ Rated Load	78°C
S.F. Amps				Temp. Rise @ S.F. Load	99°C
				Locked-rotor Power Factor	39.6
				Rotor inertia	1.28 LB-FT <sup>2</sup>

Load Characteristics 400 V, 50 Hz, 10 HP

% of Rated Load	25	50	75	100	125	150	S.F.
Power Factor	48	71	80	84	85	85	85
Efficiency	89.5	92	91.6	90.4	88.8	86.4	89.4
Speed	1492	1483	1473	1461	1449	1433	1454
Line amperes	6.3	8.33	11.1	14.3	17.7	22.1	16.3

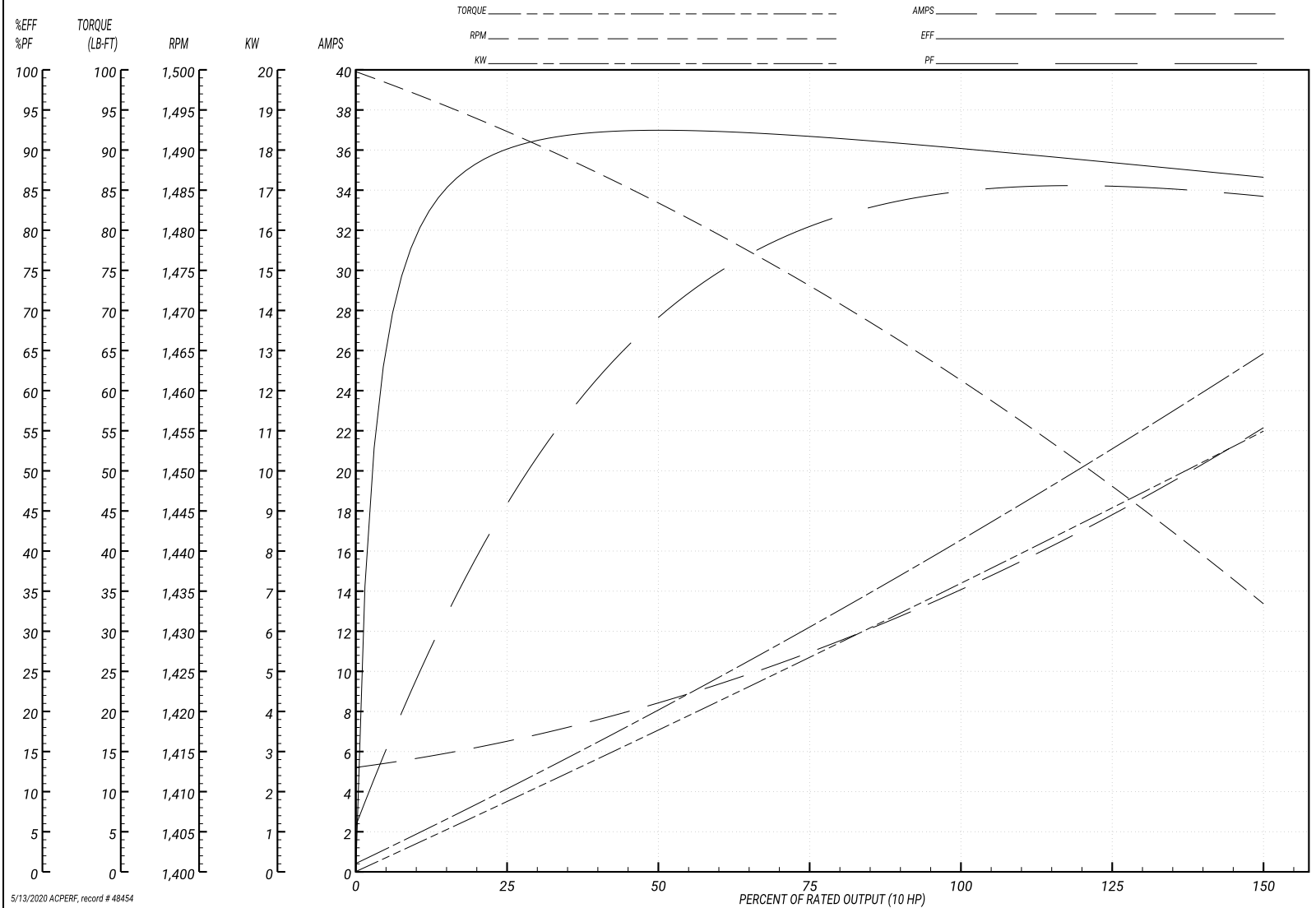
Performance Graph at 400V, 50Hz, 10.0HP Typical performance - Not guaranteed values

ABB Motors and Mechanical Inc.

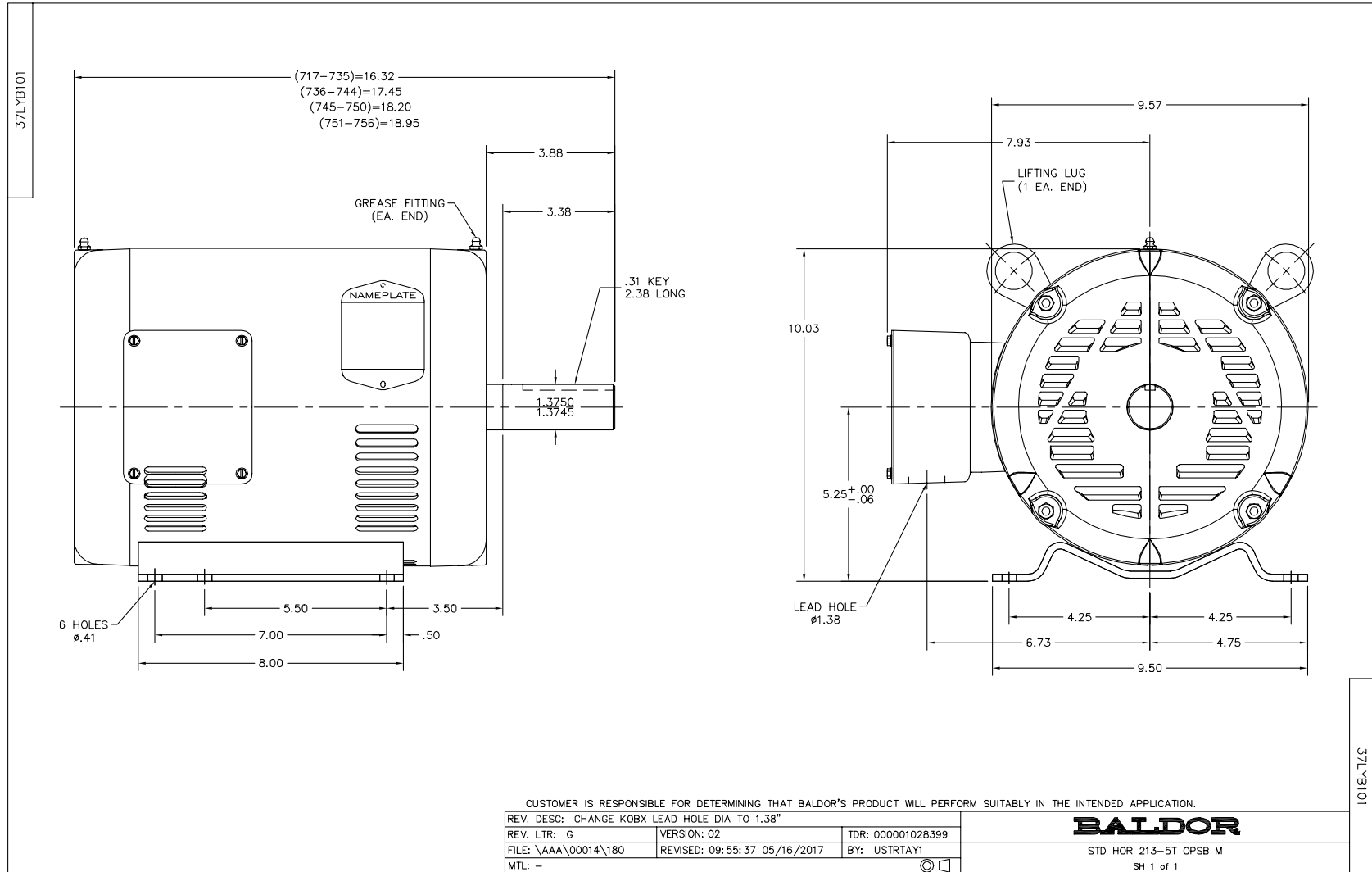
WINDING # 37WGR070

Typical performance - not guaranteed values.

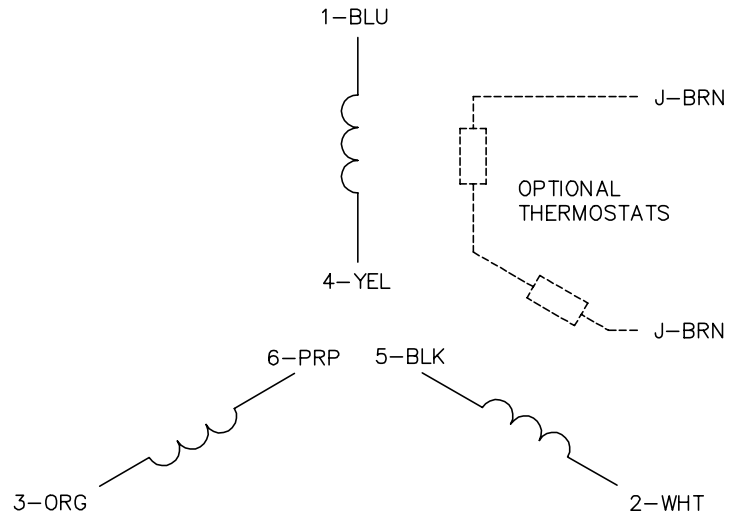
10 HP 3 PH 50 HZ 1460 RPM 400 V 3752M  
 TORQUES(LB-FT): PO=128 PU=42.5 LR=61 LRA=108



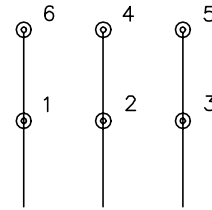
5/13/2020 ACPERF, record # 48454



CD0382

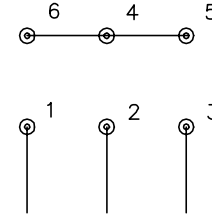


RUN CONNECTION  
(1D)



LINE

START CONNECTION  
(1Y)



LINE

NOTES:

1. INTERCHANGE ANY TWO LINE LEADS TO REVERSE ROTATION.
2. OPTIONAL THERMOSTATS ARE PROVIDED WHEN SPECIFIED.
3. ACTUAL NUMBER OF INTERNAL PARALLEL CIRCUITS MAY BE A MULTIPLE OF THOSE SHOWN ABOVE.
4. LEAD COLORS ARE OPTIONAL. LEADS MUST ALWAYS BE NUMBERED AS SHOWN.
5. FOR ACROSS-THE-LINE STARTING, USE 'RUN' CONNECTION.

CD0382

REV. DESC: ADD CLASS CONN00000007		
REV. LTR: F	VERSION: 01	TDR: 000001099922
FILE: \AAA\00005\243	REVISED: 09:05:32 02/19/2019	BY: ENBRIRO
MTL: -	⊙ □	

**BALDOR - RELIANCE**®

3PH, SV, 6 LEADS, Y START/D RUN

SH 1 of 1